

HyperLink Wireless brand 2.4 GHz 24 dBi High Performance Die Cast Reflector Grid Wireless LAN Antenna - Model: HG2424G

Applications and Features

- Applications:**
- 2.4 GHz ISM Band
 - IEEE 802.11b, 802.11g Wireless LAN
 - IEEE 802.11n (Pre-N, Draft-N, MIMO) Applications
 - WiFi Systems
 - Long-range Directional Applications
 - Point to Point Systems
 - Point to Multi-point Systems
 - Wireless Bridges
 - Backhaul Applications
 - Wireless Video Systems

- Features:**
- Superior performance
 - Die Cast aluminum construction
 - UV stable light gray powder coat finish
 - All weather operation
 - 8° beam-width
 - 12 inch coax lead
 - Easy to assemble
 - RoHS Compliant



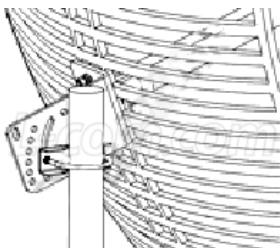
Description

Superior Performance

The HyperGain® HG2424G High-Performance Reflector Grid Wi-Fi Antenna provides 24 dBi gain with an 8 degree beam-width for long-range highly directional applications. Applications include point to point systems, point to multi-point and wireless bridges in the 2.4GHz ISM band as well as IEEE 802.11b, 802.11g and 802.11n wireless LAN systems. It can be installed for either vertical or horizontal polarization.



Rugged and Weatherproof



This 24dB grid antenna's construction features a rust-proof die cast aluminum reflector grid for superior strength and light weight. This antenna's 2-piece reflector grid is simple to assemble and significantly reduces shipping costs. The grid surface is UV powder coated for durability and aesthetics. The open-frame grid design minimizes wind loading.

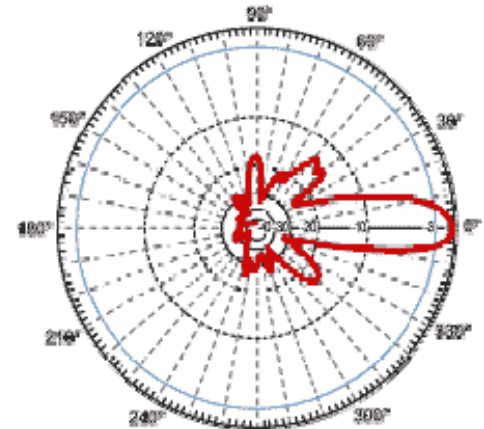
The HG2424G antenna is supplied with a 60 degree tilt and swivel mast mount kit. This allows installation at various degrees of incline for easy alignment. It can be adjusted up or down from 0° to 60°.

Specifications

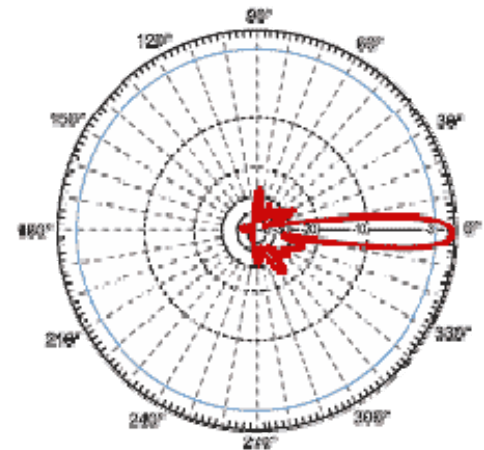
| | |
|-------------------------------------|---|
| Frequency | 2400-2500 MHz |
| Gain | 24 dBi |
| -3 dBi Beam Width | 8 degrees |
| Cross Polarization Rejection | 26 dBi |
| Front to Back Ratio | 24 dB |
| Sidelobe | -20dB Max |
| Impedance | 50 Ohm |
| Max. Input Power | 50 Watts |
| VSWR | < 1.5:1 avg. |
| Weight | 8 lbs. (3.62 kg) |
| Grid Dimensions | 39.5 in (100 cm) x 23.5 in (60 cm) |
| Mounting | 1.25 - 2 in. (31.8 - 50.8 mm) dia. mast |
| Elevation Angle | 0 to +10 degrees |
| RoHS Compliant | Yes |
| Operating Temperature | -40° C to to 85° C (-40° F to 185° F) |
| Lightning Protection | DC Short |

Wind Loading Data

| Wind Speed (MPH) | Loading (2.1 sq. ft.) |
|------------------|-----------------------|
| 100 | 80.5 lb. |
| 140 | 125.5 lb. |



Vertical



Horizontal

Guaranteed Quality

This product is backed by L-com's Limited Warranty