

## 2.4 GHz 17 dBi 90 Degree Sector Panel Wireless LAN Antenna Model: HG2417P-090

### Applications and Features

---

**Applications:**

- 2.4 GHz ISM Band
- IEEE 802.11b and 802.11g Wireless LAN
- Bluetooth®
- Public Wireless Hotspot
- WiFi
- Wireless Video Systems
- Wireless Internet Provider "cell" sites

**Features:**

- Superior performance
- All weather operation
- 90° beam-width
- 20° Down-Tilt Mounting Bracket
- Includes Mast Mounting Hardware
- Integral N-Female Connector
- RoHS Compliant



### Description

---

**Superior Performance**

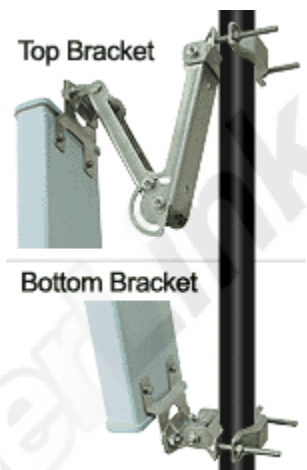
The HyperGain® HG2417P-090 Sector Panel WiFi Antenna combines high gain with a wide 90° beam-width. It is a professional quality "cell site" antenna designed primarily for service providers in the 2.4GHz ISM band. Applications include IEEE 802.11b and 802.11g wireless LAN systems.

**Rugged and Weatherproof**

This antenna features a heavy-duty plastic radome for all-weather operation. The mounting system adjusts from 0 to 20 degrees down-tilt.

**Ideal for Wireless Internet "Cell" Sites**

This WiFi antenna is an ideal choice for Wireless Internet Provider "cell" sites since the cell size can be easily determined by adjusting the down-tilt angle. Horizontal coverage is a full 90 degrees.



## Specifications

### Electrical Specifications

Frequency	2400-2500 MHz
Gain	17 dBi
Horizontal Beam Width	90 degrees
Vertical Beam Width	+/- 6.5°
Impedance	50 Ohm
Max. Input Power	250 Watts
VSWR	< 1.3:1 avg.
Connector	N Female
Lightning Protection	DC Short

### Mechanical Specifications

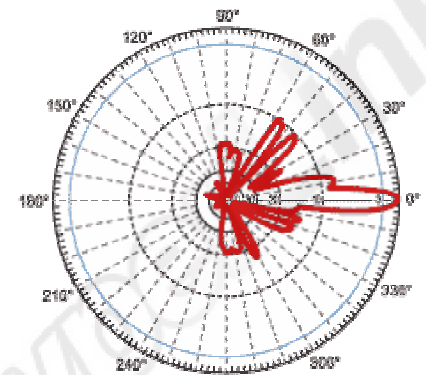
Weight	10 lbs. ( 4.54 Kg)
Dimensions	39 x 6 x 2.5 inches (99 x 15.3 x 6.4 cm)
Radome Material	UV-Inhibited Polymer
Operating Temperature	-40° C to to 85° C (-40° F to 185° F)
Mounting	2 inch (5 cm) O.D. pipe max.
Polarization	Vertical
Down-tilt (mech)	0 to 20 degrees (adjustable)
RoHS Compliant	Yes

### Wind Loading Data

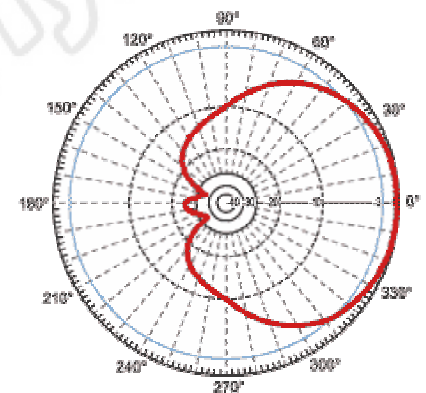
Wind Loading	Front Surface	Side Surface
Area	1.63 sq. ft. (.15 sq. meters)	0.68 (.06 sq. meters)
@ 100 MPH (161 KPH)	74 lbs. (33.5 Kg)	35 lbs. (15.8 Kg)

### Guaranteed Quality

This product is backed by Hyperlink's Limited Warranty



**Vertical**



**Horizontal**